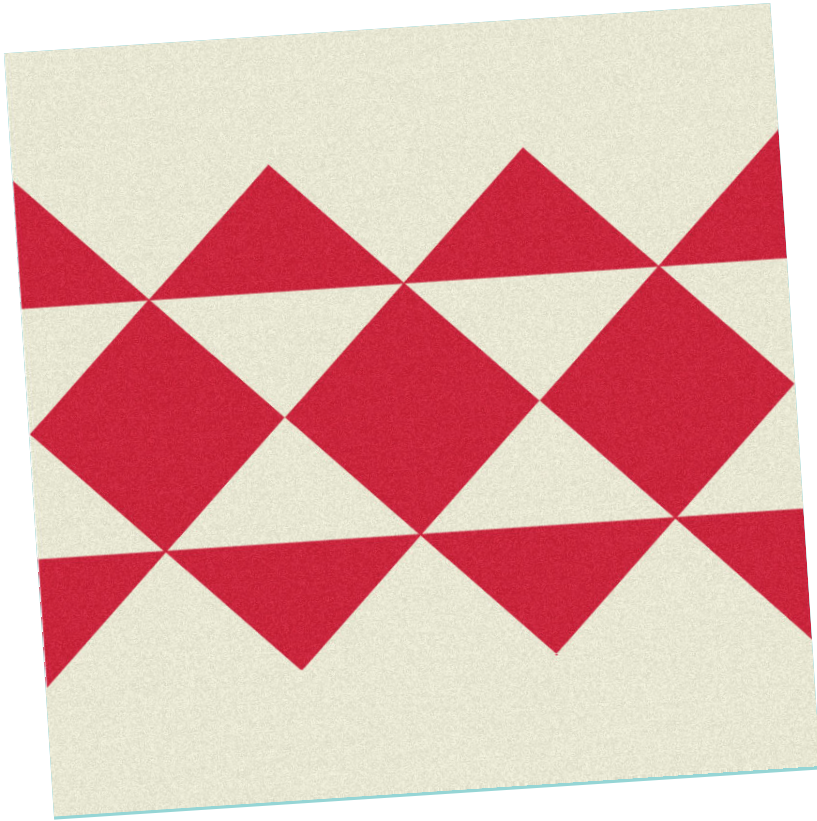


INGREDIENTS



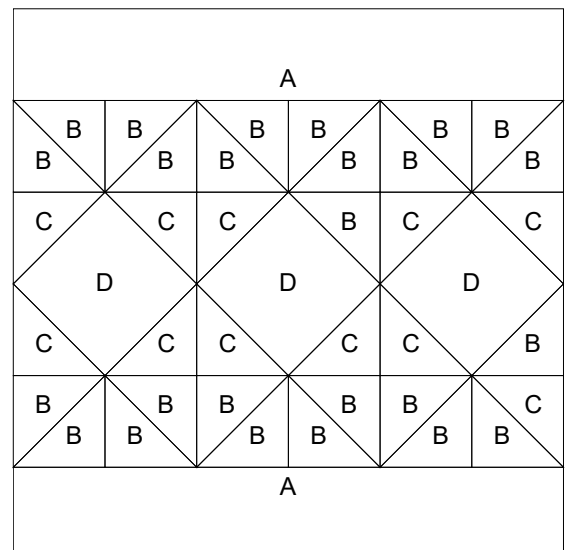
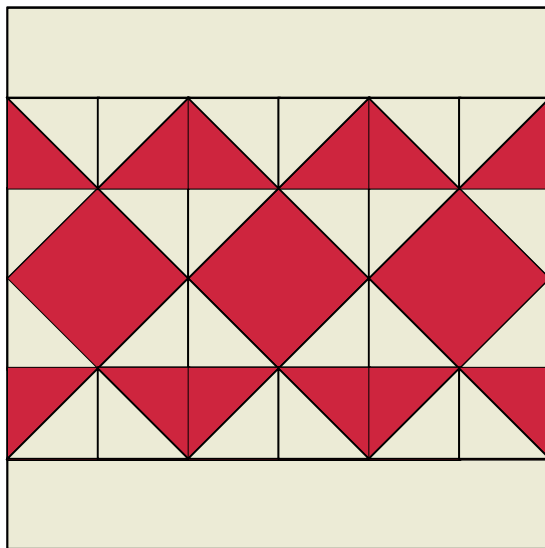
From Snow (9900 11), cut:

- * {A} (2) 1½" x 6½" strips
- * {B} (6) 2" squares
- * {C} (12) 1½" squares

From Scarlet (9900 47), cut:

- * {B} (6) 2" squares
- * {D} (3) 2½" squares

- 9900 11 snow
- 9900 169 ruby ice
- 9900 65 green
- 9900 121 betty's green
- 9900 216 peacock
- 9900 77 dill
- 9900 14 christmas green
- 9900 88 bubble gum
- 9900 120 betty's pink
- 9900 258 geranium
- 9900 47 scarlet
- 9900 17 country red



RIBBON CANDY

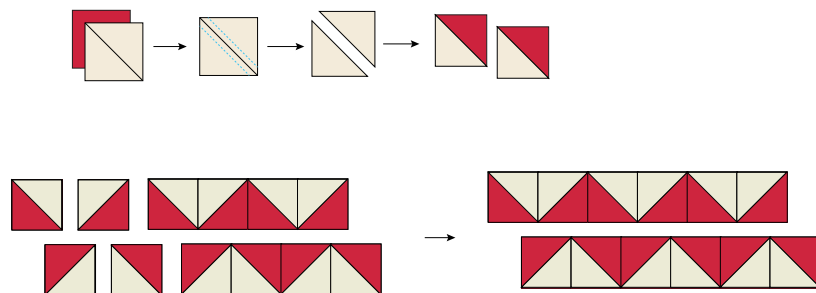
by Andrea Arledge

YIELD 6½" square unfinished

by Andrea Arledge

STEP 1. MAKE HALF SQUARE TRIANGLES

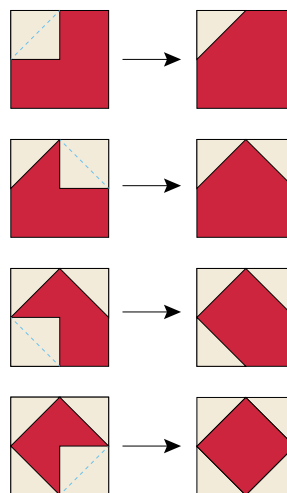
Mark the diagonal on the back of the (6) 2in background squares and match each square with a Print/Color 2in square, right sides together. Sew on either side of the marked line using a scant $\frac{1}{4}$ inch seam. (Bonus Tip! When working with pieces this small, make sure you lower your stitch length so the thread locks together more often!) Cut on the marked line to create two HST. Trim to 1.5 inches square. Repeat for all six of the pairs, creating 12 HST total.



Sew six HST together following the block diagram, repeat with the remaining six HST to create the two HST Rows.

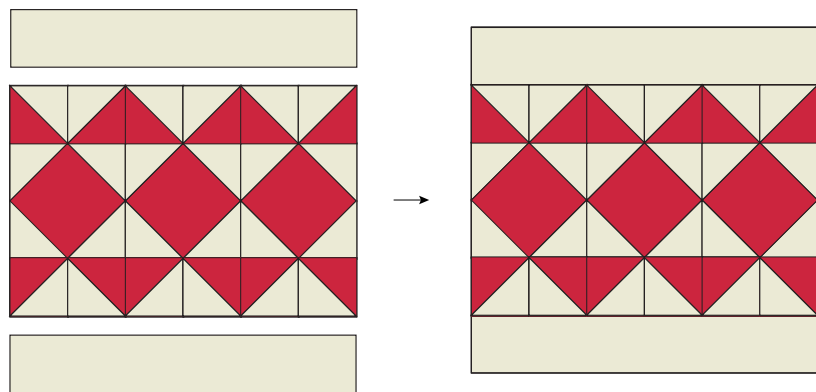
STEP 2. MAKE SQUARE-IN-SQUARE

Mark the diagonal on the back of the (12) 1.5in background squares. Sew each 1.5in square on to the corners of the 2.5in Print/Color squares on the marked diagonal line, right sides together. Press the squares open, and then cut away the bottom two layers. Repeat for all three 2.5in Print/Color squares creating three Square-in-a-Square blocks. Sew the three Square-in-a-Square blocks together to create the Middle Row.

**STEP 3. ASSEMBLE THE BLOCK**

Gather the Top and Bottom Row pieces along with the two HST Rows and the Middle Row. Sew the HST Rows to the top and bottom of the Middle Row, press seams open.

Sew the Top and Bottom Row pieces to the HST Rows, press the seam to the Top and Bottom Row pieces for a flat seam.

**Bonus tip!**

When working with smaller blocks that have a lot of seams, it will help stabilize the block if you “stay stitch” the edges. I sew about a $\frac{1}{8}$ inch seam around the edge of the block to help keep the rows from separating.