

Bespoke Blooms

brenda riddle designs
Acorn Quilt & Gift Company



Quilt Pattern

No AQ 247 / AQ 247G

Ella Mini

Size: 27" x 27"

F8 Friendly



Quilt Pattern

No AQ 247 / AQ 247G

Ella

Size: 72" x 72"

This Bespoke Blooms collection is specially made for lovely quilts. The small scale makes them perfect for the quilts I love to call "littles". The sweet floral prints and coordinating tone-on-tone prints, stripes, and classic gingham create a wonderful palette for quilts ranging from lovely "littles" to everything bigger, charming home decor, and even lovely garments. Whatever you choose - these Bespoke Blooms will surely add that specially made touch to all you make.

Patterns created by
Acorn Quilt & Gift Co.

modafabrics.com



moda

MAY
2016
DELIVERY

101





No 18624 11* Petal



No 18620 12* Petal



No 18625 13 Petal



No 18606 35* Strawberry



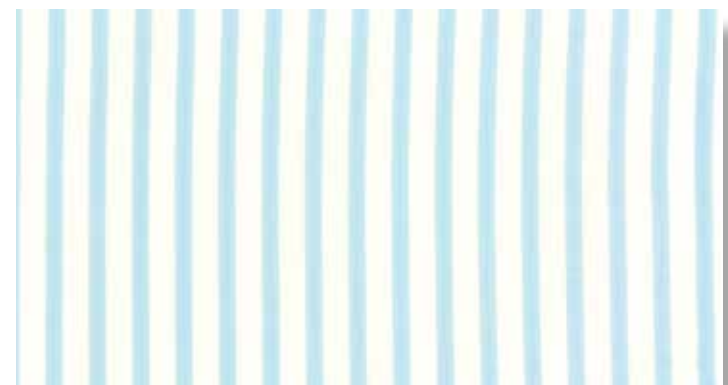
No 18622 14 Petal



No 18623 12 Petal

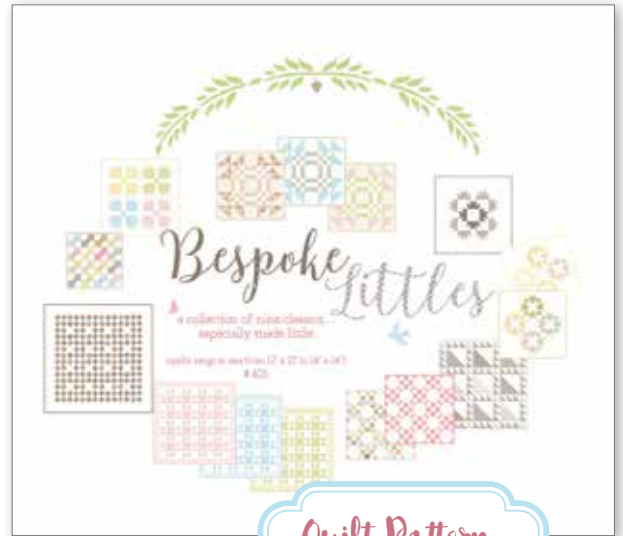


No 18621 12* Petal

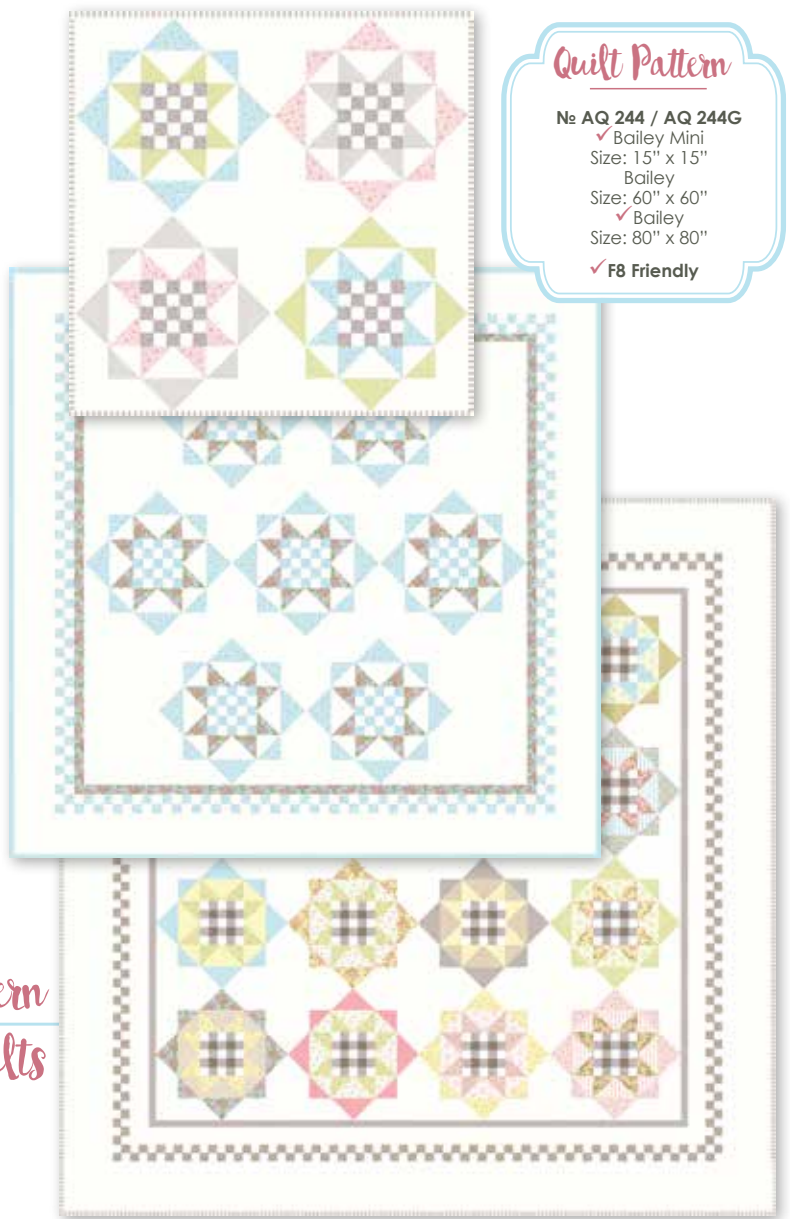


No 18624 13 Rain

"Bespoke" means especially made



Quilt Pattern
 No AQ 405 / AQ 405G
 Bespoke Littles Booklet



Quilt Pattern
 No AQ 244 / AQ 244G
 ✓ Bailey Mini
 Size: 15" x 15"
 ✓ Bailey
 Size: 60" x 60"
 ✓ Bailey
 Size: 80" x 80"
 ✓ F8 Friendly

1 Pattern
 3 Quilts

Simple Shortbread

FROM: BRENDA RIDDLE

INGREDIENTS:

1 1/3 CUPS (2 STICKS PLUS 6 TABLESPOONS) UNSALTED BUTTER, ROOM TEMPERATURE, PLUS MORE FOR PANS

2/3 CUP SUGAR

3/4 TEASPOON SALT

3/4 TEASPOON PURE VANILLA EXTRACT

3 1/3 CUPS ALL-PURPOSE FLOUR

1/2 CUP CONFECTIONERS SUGAR (FOR SPRINKLING ON COOKIES AFTER BAKING)

1. PREHEAT OVEN TO 275 DEGREES. BUTTER A 9-BY-13-BY-1-INCH BAKING PAN, AND LINE BOTTOM WITH PARCHMENT PAPER. IN THE BOWL OF AN ELECTRIC MIXER FITTED WITH THE PADDLE ATTACHMENT, CREAM BUTTER AND SUGAR ON MEDIUM SPEED UNTIL LIGHT AND FLUFFY, ABOUT 2 MINUTES. ADD SALT AND VANILLA, AND BEAT TO COMBINE. ADD FLOUR, 1 CUP AT A TIME, BEATING ON LOW SPEED UNTIL JUST COMBINED.

2. PRESS DOUGH INTO PREPARED PAN, LEVELING AND SMOOTHING THE TOP. USING A DOUGH SCRAPER OR THE BACK OF A KNIFE, CUT DOUGH LENGTHWISE INTO NINE STRIPS, EACH SLIGHTLY LESS THAN 1 INCH WIDE. CUT THE STRIPS CROSSWISE INTO THIRTY-SIX 3-INCH BARS. USING THE TINES OF A FORK OR A WOODEN SKEWER, CREATE A DECORATIVE PATTERN ON THE SURFACE.

3. BAKE SHORTBREAD UNTIL EVENLY PALE GOLDEN, BUT NOT BROWNED, 70 TO 85 MINUTES. TRANSFER PAN TO A WIRE RACK TO COOL. INVERT PAN, AND REMOVE PARCHMENT. TURN SHORTBREAD OVER, AND CAREFULLY BREAK, OR CUT WITH A SERRATED KNIFE, INTO BARS. LIGHTLY SPRINKLE CONFECTIONERS SUGAR OVER TOPS OF COOKIES.



Quilt Pattern

No AQ 245 / AQ 245G
Mills Cabin Mini
Size: 17" x 17"
PP Friendly



No 18625 14
Rain



No 18606 36
Rain



No 18621 13*
Rain



No 18620 13*
Rain



No 18623 13*
Rain



No 18622 11*
Rain Linen White

the **Cookie** exchange

RECIPES FROM YOUR FAVORITE MODA DESIGNERS

103

moda






 modafabrics.com



No 18620 16
Pebble



No 18621 16*
Pebble



No 18606 40*
Pebble



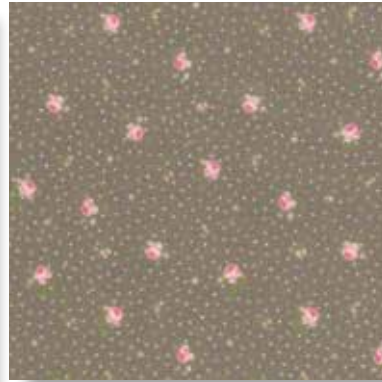
No 18624 17
Pebble



No 18625 17
Pebble



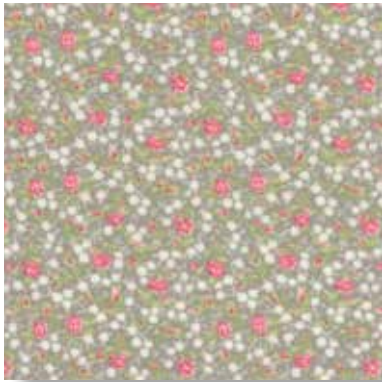
No 18606 41
Cobblestone



No 18621 17
Cobblestone



No 18620 17*
Cobblestone



No 18623 16*
Cobblestone



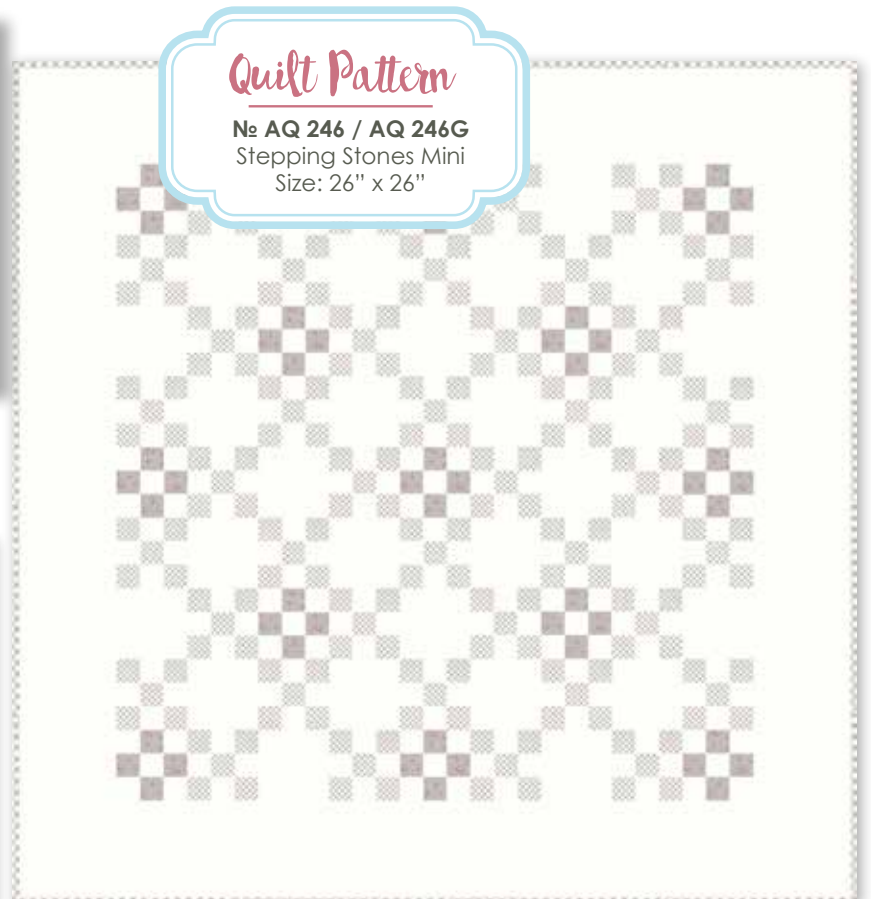
No 18622 13
Pebble Linen White



No 18621 15*
Sunshine



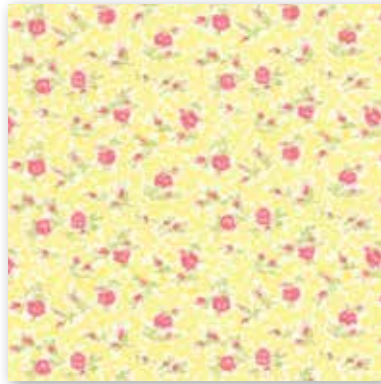
No 18606 39*
Sunshine



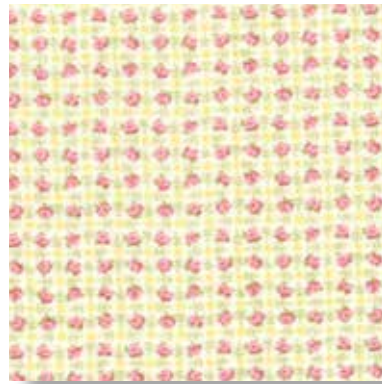
Quilt Pattern
No AQ 246 / AQ 246G
Stepping Stones Mini
Size: 26" x 26"



№ 18620 15 Sunshine



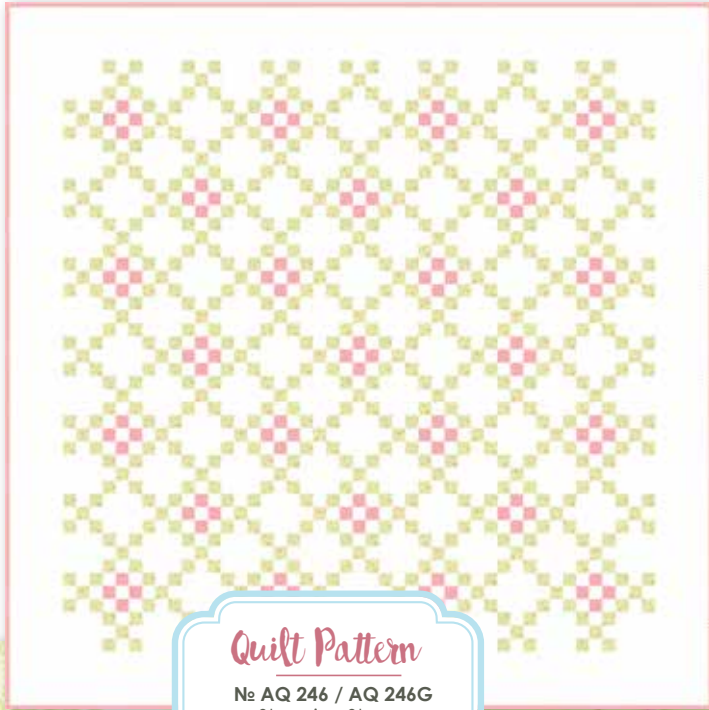
№ 18623 15* Sunshine



№ 18622 12
Sunshine Linen



№ 18620 11*
Linen White



Quilt Pattern
№ AQ 246 / AQ 246G
Stepping Stones
Size: 78" x 78"



№ 18621 11*
Linen White



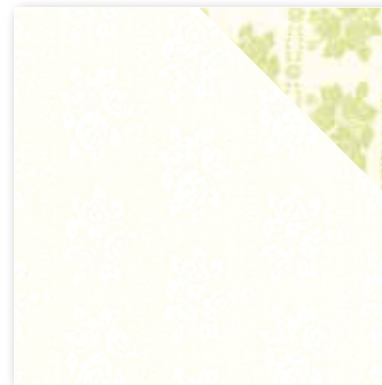
№ 18624 14
Sprout



№ 18625 15*
Sprout



№ 18621 14*
Sprout



№ 18625 12
Linen White



№ 18606 33
Linen White



№ 18620 14
Sprout



№ 18623 14
Sprout



№ 18606 37
Sprout



№ 18622 15*
Sprout