

moda

William Morris

A new quilting collection inspired by the archives of the
Victoria and Albert Museum exclusively for Moda Fabrics



Finished Quilt: 72"x80"

William Morris

Finished Size: 72" x 80"

Quilter Basics

Read instructions before beginning a project.

All instructions include a 1/4" seam allowance.

Press as you go. Press seams in one direction.

22" measurement is approximate.

WOF = Width of Fabric

Cutting

NOTE: For ease of piecing, sort and label the various fabrics as they are cut. Sort by use, i.e. for borders, center medallion, hour glass blocks and size.

Fabrics 1 – 8

From **each** of the 8 Fat Quarters

Cut 3 - 5½" x 21" strips.

From **each** strip, cut 3 - 5½" x 5½" squares for quarter square triangles. Total number of 5½" squares: 72 (9 from each FQ)

Fabrics 9 – 29

From **each** of the 21 Fat Eighths

Cut 1 - 5½" x 21" strip. From the strip, cut 3 - 5½" x 5½" squares for quarter square triangles. Total number of 5½" squares: 63 (3 from each F8)

Fabric 30



Cut 2 - 5½" x WOF strips.

From the strips cut 9 - 5½" x 5½" squares for quarter square triangles

Cut 1 - 3¼" x WOF strip.

From the strip cut 8 - 3¼" x 3¼" squares for the pieced center medallion border.

From the remainder cut 2 - 1⅞" x 1⅞" squares for the pieced center medallion border.

Cut 8 - 2½" x WOF strips for binding.

Fabric 31



Cut 1 - 6⅛" x WOF strip.

From the strip cut 1 - 6⅛" x 6⅛" square for the center medallion. From the remainder cut 3 - 5½" x 5½" squares for quarter square triangles.

Cut 1 - 5½" x WOF strip.

From the strip cut 6 - 5½" x 5½" squares for quarter square triangles.

Fabric 32



Cut 1 - 5½" x WOF strip.

From the strip cut 3 - 5½" x 5½" squares for quarter square triangles.

From the remainder cut 2 - 1½" x 18½" strips for medallion border, Border 1.

Cut 1 - 1½" x WOF strip.

From the strip cut 2 - 1½" x 20½" strips for medallion border, Border 1.

Fabric 33



Cut 2 - 5½" x WOF strips.

From the strips cut 12 - 5½" x 5½" squares for quarter square triangles.

Cut 8 - 2½" x WOF strips.

Join the strips into 4 pairs for Border 2.

Fabric 34



Cut 22 - 5½" x WOF strips

From the strips, cut a total of 153 - 5½" x 5½" squares for quarter square triangles and the center medallion.

Cut 1 - 4½" x WOF strip.

From the strip, cut 4 - 4½" x 4½" squares for the center medallion.

Cut 2 - 1⅞" x WOF strips

From the strips, cut a total of 34 - 1⅞" x 1⅞" squares for the center medallion border.

moda

Construction

Fabrics for Center Medallion

Fabric 3– 2-5½" squares. Cut once diagonally to yield 4 triangles; **Fabric 7**– 2-5½" squares. Cut twice diagonally to yield 8 triangles; **Fabric 8**– 2-5½" squares. Cut twice diagonally to yield 8 triangles; **Fabric 31** – 1-6⅛" center square; **Fabric 33** – 2-5½" squares. Cut twice diagonally to yield 8 triangles; **Fabric 34**– 4-4½" corner squares and 2-5½" squares. Cut twice diagonally to yield 8 triangles.

Piecing the Center Medallion

Step 1: Stitch the four Fabric 3 triangles to the sides of the Fabric 31 center square. Press seams toward arrows. Align the ¼" marks on ruler with points of center square to square unit. Center square should measure 8½" x 8½" with seams.

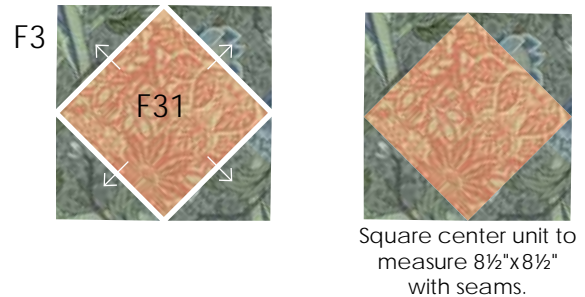
Step 2: Using the triangles cut from Fabrics 7, 8, 33 and 34 – 5½" squares, piece two sets of four matching quarter-square triangle units. Press seams open. Square units to measure 4½" x 4½" with seams. *See diagram.*

Join two units as shown to make four side units - each unit should measure 4½" x 8½".

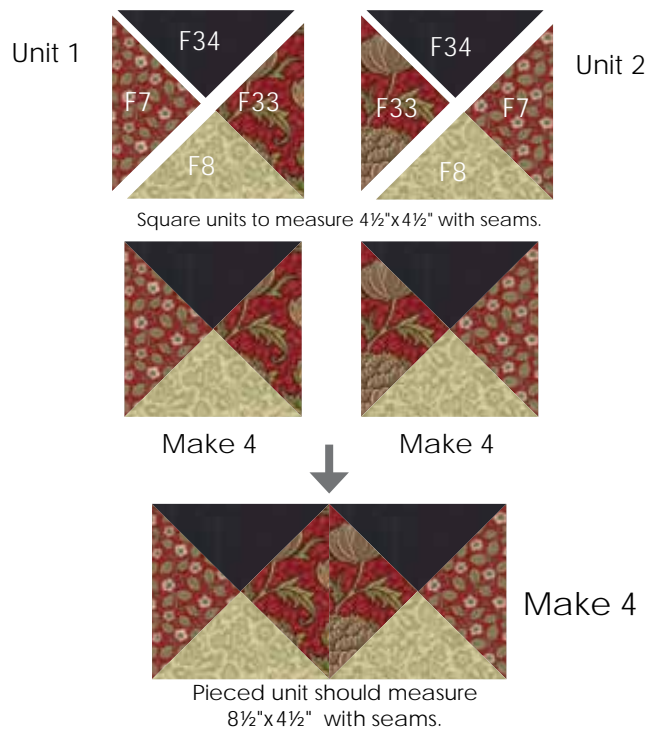
Step 3: Add two pieced units to the sides of the center square. Press seams open.

Step 4: Stitch the 4½" x 4½" black squares to opposite ends of the remaining two side units. Press seams open.

Step 1



Step 2



Step 3



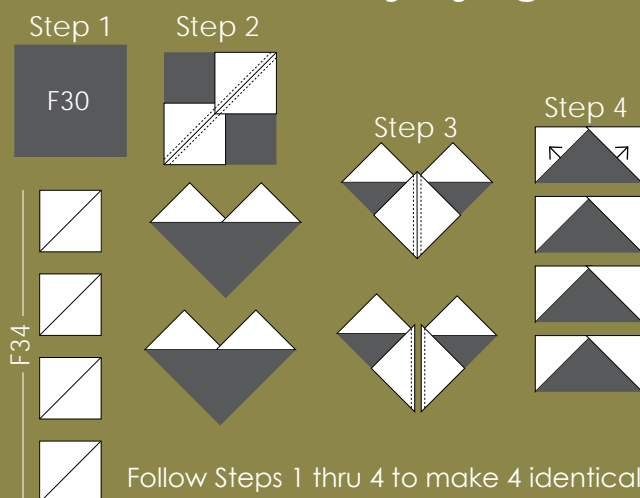
Step 5

Stitch the rows to the top and bottom of the Step 3 unit. The center block should measure 16½" x 16½".

Step 4



Easy Flying Geese



Follow Steps 1 thru 4 to make 4 identical flying geese units.

1. Draw a diagonal line on the wrong side of the 1⅞" squares.
2. With right sides together align 2 small marked squares on opposite corners of 3¼" square. Stitch a scant ¼" on opposite sides of marked line. Cut on marked line. Press away from large triangle.
3. Align the 2 remaining marked squares on the corner of the 2 heart shaped units. Stitch a scant ¼" on opposite sides of marked line.
4. Cut on marked line. Press toward arrow. Yield 4 flying geese blocks measuring 2½" x 1½"
5. Repeat to make a total of 32 flying geese units.

Construction – cont.

Making the Pieced Medallion Border

1. Select 8 - 3¼" x 3¼" F30 squares. and 32 - 1⅞" x 1⅞" F34 squares.
2. Use the **Easy Geese Method**, to make 32 Flying Geese units that measure 1½" x 2½" with seams. *See instructions above.*
3. Join 8 Flying Geese units end to end to make 4 border strips measuring 1½" x 16½".
4. Stitch a pieced Flying Geese border strip to opposite sides of the center medallion block. Red triangles should be pointing outward. Press toward center medallion.
5. Using the 2 remaining F30 squares and the 2 F34 squares measuring 1⅞" x 1⅞" make 4 half square triangle units that measure 1½" x 1½".
6. Add a half square triangle unit to each end of the 2 remaining Flying Geese border-strips. The red triangles in the HSTs should face the center. Sew the strips to the top and bottom of the Center Medallion. The center medallion should measure 18½" x 18½" with seams.



Center medallion should measure 18½"x18½" with seams.

Construction – cont.

Add Center Medallion Border (Border 1)

1. Stitch a $1\frac{1}{2}$ " x $18\frac{1}{2}$ " border strip to opposite sides of the center medallion. Press the seams toward the border strip.
2. Add the $1\frac{1}{2}$ " x $20\frac{1}{2}$ " border strips to the top and bottom of the center medallion. Press the seams toward the border strip. The center medallion should measure $20\frac{1}{2}$ " x $20\frac{1}{2}$ " including the border.

Center medallion with borders should measure $20\frac{1}{2}$ "x $20\frac{1}{2}$ " with seams.



Making Hourglass Blocks

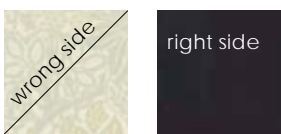


Select 115 print and 115 black-background $5\frac{1}{2}$ " x $5\frac{1}{2}$ " squares. Follow directions below to make 230 hourglass blocks. Blocks should measure $4\frac{1}{2}$ " x $4\frac{1}{2}$ " with seams. The print triangles in each block should match.

Matching Hourglass Blocks

Fabrics needed for Matching Hourglass Blocks – 115 print and 115 black $5\frac{1}{2}$ " squares.

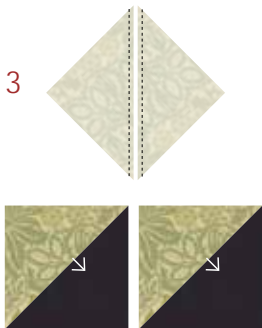
Step 1



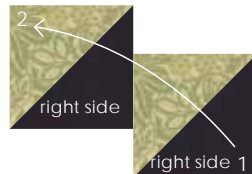
Step 2



Step 3

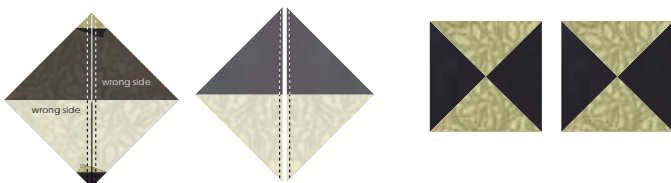


Step 4



1. Draw a diagonal line on the wrong side of the $5\frac{1}{2}$ " print squares.
2. With right sides together align a marked print square with a $5\frac{1}{2}$ " black square.
3. Stitch a scant $\frac{1}{4}$ " on opposite sides of marked line. Cut on marked line. Press toward dark triangle.
4. With right sides together align corners 1 and 2 of the two half square triangle units. Nest seams together. See diagram.
5. Draw a diagonal line on the wrong side of the nested squares. Stitch a scant $\frac{1}{4}$ " on opposite sides of marked line. Cut on marked line. Press seams open. This yields 2 matching hourglass blocks. Trim and square blocks to measure $4\frac{1}{2}$ " x $4\frac{1}{2}$ " with seams.
6. Repeat to make a total of 230 hourglass blocks.

Step 5

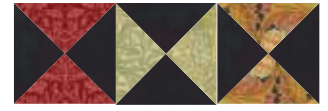


Square blocks to measure $4\frac{1}{2}$ "x $4\frac{1}{2}$ " with seams.

Assembly

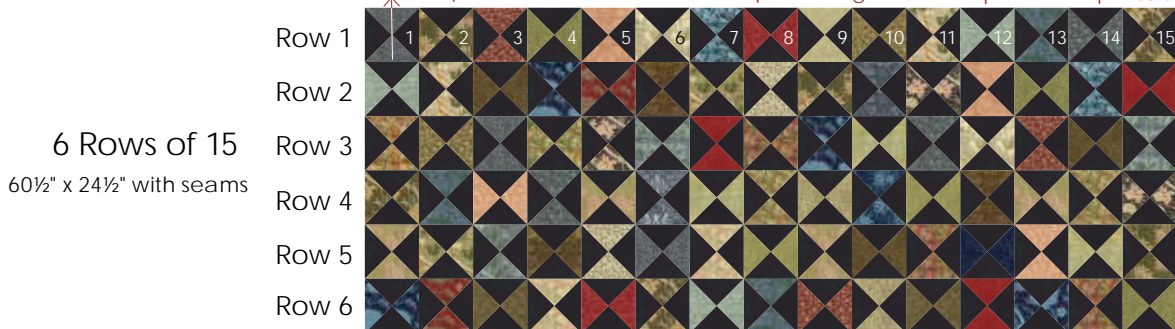
Assemble the Quilt Center

Note: The blocks should be turned so the black background fabric is always next to a print.

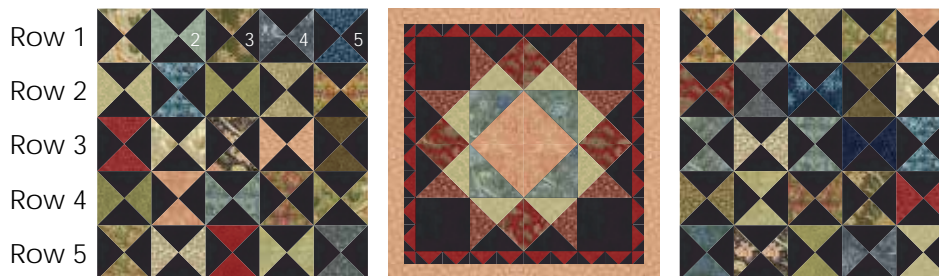


1. Lay out 25 hourglass blocks into five rows of five. The four corners should have the print triangles in the top-bottom quarters.
2. Join the blocks to make rows. Press the seams open. Then join the rows to complete the square section. Press the seams open. The section should measure $20\frac{1}{2}$ " x $20\frac{1}{2}$ ". Repeat to make a 2nd square section.
3. Stitch one square section to each side of the center medallion making sure the print blocks in the corners are in the top and bottom quarters. Press the seams toward the red inner border (Border 2). The center section will now measure $60\frac{1}{2}$ " x $20\frac{1}{2}$ " with seams.
4. Sort the remaining 180 blocks into two groups of 90. Lay out each group of 90 into six rows of 15 blocks each. Make sure the print triangles are in the top-bottom quarters in the upper left corner to begin the top section and in the side to side quarters to begin the bottom section.
5. Join the blocks to make rows. Press the seams open. Then join the rows to make a pieced section of six rows. Press the seams open. The pieced section should measure $60\frac{1}{2}$ " x $24\frac{1}{2}$ " with seams. Repeat to make a 2nd pieced section.
6. Stitch the pieced sections to the top and bottom of the center section. Press the seams open. The quilt top should measure $60\frac{1}{2}$ " x $68\frac{1}{2}$ " with seams.

The top left corner should have the print triangles in the top-bottom quarters.

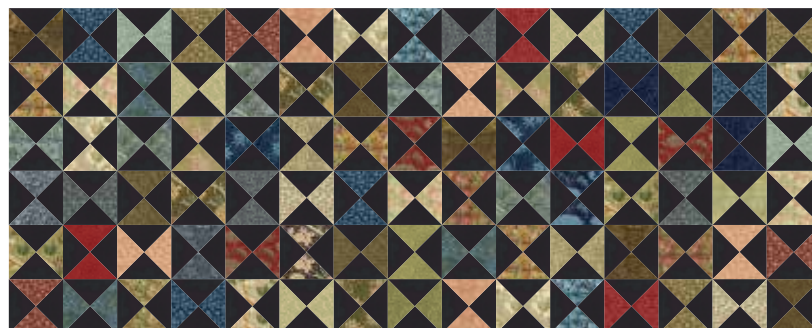


6 Rows of 15
 $60\frac{1}{2}$ " x $24\frac{1}{2}$ " with seams



5 Rows of 5
 $20\frac{1}{2}$ " x $20\frac{1}{2}$ " with seams

The top left corner of the bottom section should have the print triangles in the side quarters. →



Quilt top should measure $60\frac{1}{2}$ " x $68\frac{1}{2}$ " with seams.

Assembly-cont.

Add Inner Border (Border 2)

1. Cut 2 of the Fabric 33 2½" border strip pairs to measure 68½" and the 2 remaining pairs to measure 64½".
2. Sew a 2½" x 68½" Border 2 strip to opposite sides of the quilt top. Press the seams toward the border strip.
3. Add the 2½" x 64½" Border 2 strips to the top and bottom of the quilt top. Press the seams toward the border strip. The quilt top should measure 64½" x 72½" including the border.

Quilt top should measure 64½" x 72½" with seams.



Scrappy Hourglass Blocks

In scrappy hourglass blocks....the print triangles in each block are different.

Fabrics needed for Scrappy Hourglass Blocks – 36 print and 36 black 5½" squares.

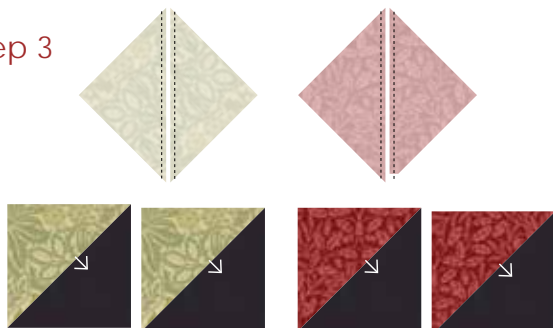
Step 1



Step 2



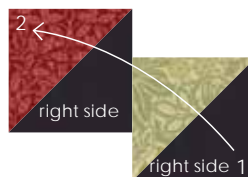
Step 3



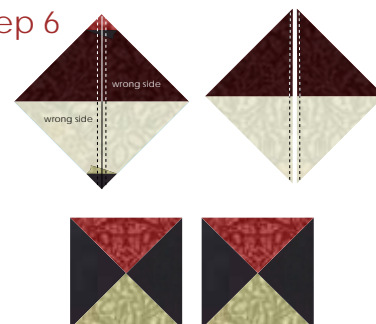
Step 4

Set aside 4 assorted half square triangle blocks for outer border corner squares.

Step 5



Step 6



1. Draw a diagonal line from corner to corner on the wrong side of the 5½" print squares.
2. With right sides together align a marked print square with a 5½" black square. Stitch a scant ¼" on opposite sides of marked line.
3. Cut on marked line. Press toward dark triangle. Make 72 half square triangle units.
3. Set aside 4 assorted half square triangle blocks for outer border corner squares.
4. With right sides together align corners 1 and 2 of two **different** half square triangle units. Nest seams together. See diagram.
5. Draw a diagonal line on the wrong side of the layered squares as shown. Stitch a scant ¼" on opposite sides of marked line. Cut on marked line. Press seams open. This yields 2 scrappy hourglass blocks.
6. Repeat to make a total of 68 scrappy hourglass blocks.

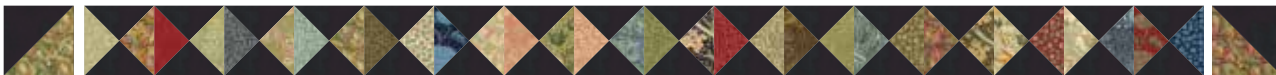
Square Scrappy Hourglass blocks to measure 4½" x 4½" with seams.

Assembly-cont.

Piecing the Scrappy Outer Border

1. Sort the scrappy hourglass blocks into 2 groups of 16 and 2 groups of 18.
2. Stitch one group of 18 blocks together to make one long strip, placing different prints next to each other. Press the seams open. The Outer Border strip should measure $4\frac{1}{2}$ " x $72\frac{1}{2}$ " with seams. Repeat to make a second strip.
3. Stitch the $4\frac{1}{2}$ " x $72\frac{1}{2}$ " Outer Border strips to opposite sides of the quilt top. Press the seams toward the inner border.
4. Stitch one group of 16 blocks along with 2 HST border corners together to make one long strip, placing different prints next to each other. Press the seams open. Outer Border strip should measure $4\frac{1}{2}$ " x $72\frac{1}{2}$ " with seams. Repeat to make a second strip.
5. Stitch the $4\frac{1}{2}$ " x $72\frac{1}{2}$ " pieced strips to the top and bottom of the quilt top. Press the seams toward the inner border strip.

Quilt top should measure $72\frac{1}{2}$ " x $80\frac{1}{2}$ " with seams.



Top and Bottom Border – Make 2.



Side Border – Make 2.

Finishing

Hint: We recommend stay-stitching the quilt top approx. $\frac{1}{8}$ " from the outer edges to keep it stable during quilting. This will help to keep the seams from separating, and will also help to keep seams flat.

Using a diagonal seam, join the 8 – $2\frac{1}{2}$ " x WOF strips end to end. Press seams open. Fold prepared strip in half wrong sides together and press to make the binding.

Layer, Quilt and Bind.

moda
William Morris

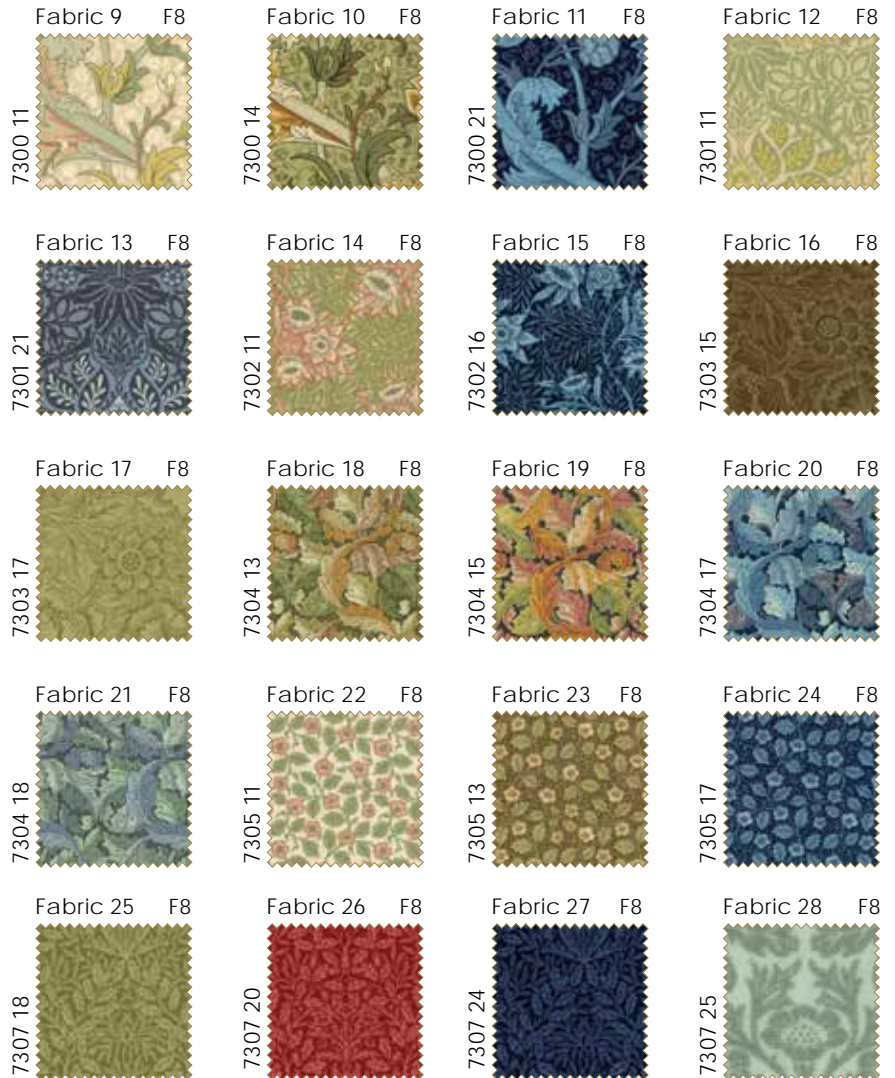
Fabric Requirements

Finished Size: 72"x80"

8 Fat Quarters



21 Fat Eighths



Also needed: both white and dark marking pens or pencils. We recommend the Sewline Pencil Trio with white, black and pink leads (Stock# FAB50030.)

Yardage



Blocks & Binding

Background



Backing: 7300 12 - 5 yards

INSPIRED.

Supporting the world's leading museum of art and design the Victoria and Albert Museum, London

moda

MODA FABRICS • 13800 HUTTON DRIVE • DALLAS, TX 75234 • 800-527-9447
 ORDER ONLINE 24 HRS. A DAY • MODAFABRICS.COM
 PS7300 — SUGGESTED RETAIL \$10.00





William Morris

A new quilting collection inspired by the archives of the Victoria and Albert Museum exclusively for Moda Fabrics

moda

